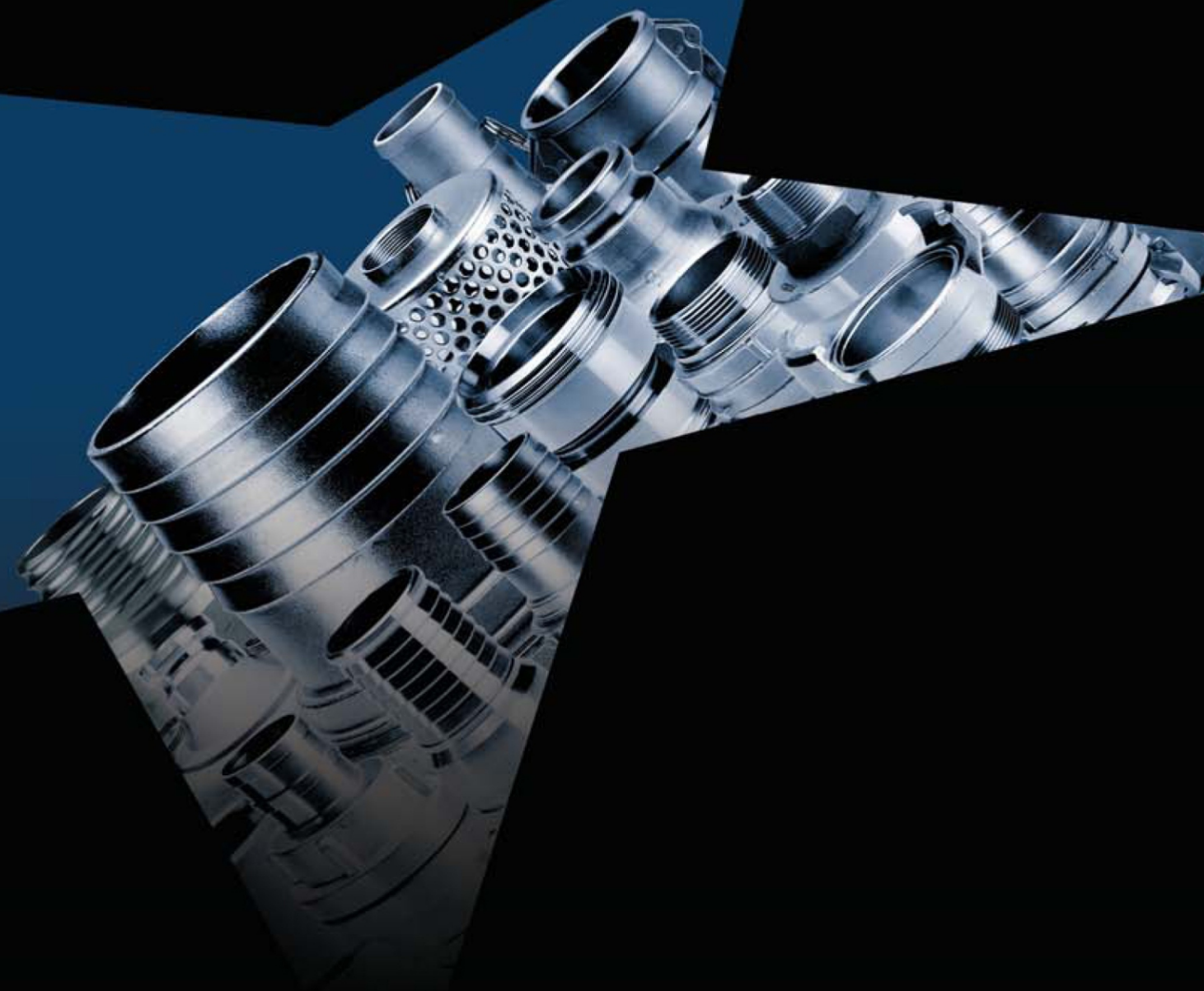




FUSHING GROUP



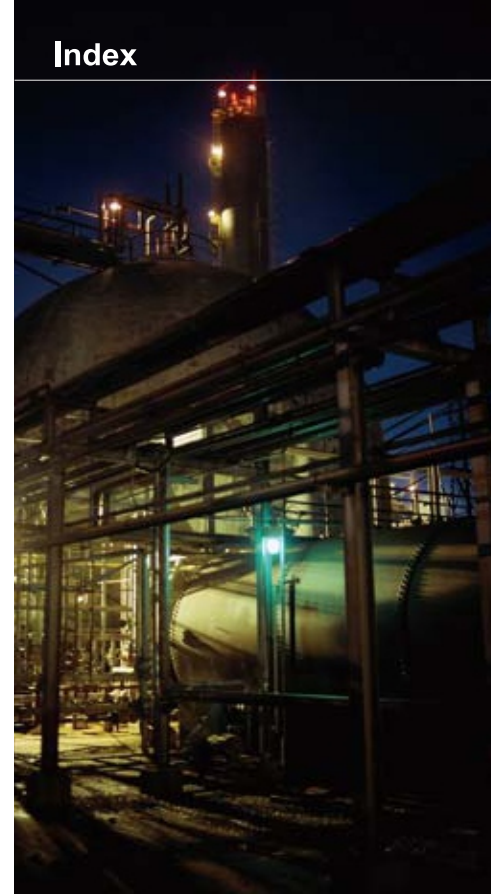
**TAIPEI OFFICE:**  
**FUSHING BROTHERS & CO.**  
7F., No.36, Ln.358, Ruiguang Road., Neihu  
Dist., Taipei, Taiwan, 114

**CHINA FACTORY:**  
**SHANGYU LIANGUANG RUBBER**  
**METAL PRODUCTS CO. LTD.**  
No.100, Wenchangge Road, Shangyu  
District, Shaoxing City, Zhejiang Province  
312351  
Tel: +86-0575-82390120  
E-Mail: [sales@integraflex.com.cn](mailto:sales@integraflex.com.cn)  
[www.integraflex.com.cn](http://www.integraflex.com.cn)



FUSHING GROUP

VERSION 2014



## CAM & GROOVE FITTINGS

Cam & groove couplers & adapters	P.01 ~ P.03
Cam couplings smooth tail with collar	P.03
Security couplers - Trigger lock	P.04
Cam couplings - DIN 2828	P.05
Couplings shank with collar	P.05
Reducers/Increases	P.06
Spool adapters & couplers	P.07
Couplers - Adaptors	P.07
Camlock spare parts	P.08
Safety straps	P.08

## DRY BREAK COUPLINGS

P.08

## API CAM COUPLINGS

P.08

## COMPOSITE HOSE FITTINGS

P.09 ~ P.10

## FERRULES & RINGS

P.11 ~ P.12

## SUCTION & DELIVERY COUPLINGS

Suction & delivery couplings (Interchangeable with Bauer type)	P.13 ~ P.15
---	-------------

Suction & delivery couplings (Interchangeable with Perrot type)	P.16 ~ P.17
--	-------------

## GUILLEMIN COUPLINGS

P.17 ~ P.20



We reserve the right to modify the specifications and properties of the products described in this catalog without notice. Reproduction in whole, in part or interpreted, of all or part of this catalog is strictly prohibited without our prior authorization.



DSP COUPLINGS

Hose end, male, female and caps P.21

TANK WAGON COUPLINGS

VB, MB, VK, MK P.22 ~ P.23

LNC COUPLINGS

Male & female ends P.24

STORZ FORGING & GRAVITY CASTING

Hose end, male, female and caps P.25

FIRE HOSE COUPLINGS

BARCELONA FITTINGS

Hose end, male, female and caps P.26

GARDEN HOSE COUPLINGS

CLAW COUPLINGS / UNIVERSAL COUPLINGS

U.S. type P.27

European type P.28

CLAMPS

Interlocking clamps P.28

Double bolt clamps P.28

Spiral clamps P.29

Superior clamps P.29

Worm drive clamps / Zebra hose clamps P.29

Clamps with EPDM P.29

Safety clamps P.29

Pinned clamps P.29

GROUND JOINT COUPLINGS P.30

FOOT VALVES P.31

GEKA P.32

SANDBLAST COUPLINGS P.33

DIN 11851 SANITARY COUPLINGS P.34

THREADED FITTINGS P.35

EXPRESS COUPLINGS P.36

SPIRAL SHANK COUPLINGS P.36

STAINLESS STEEL CAPS P.36

LECQ COUPLINGS P.37

MACON COUPLINGS P.38

SMS FEMALE COUPLINGS P.38

FLARED END P.39

BALL VALVES P.39

WATER WASHDOWN GUNS P.40





**NOZZLES**

Tapered nozzles	P.40
Brass fog nozzles	P.40
Pistol-Grip nozzles	P.40
Insulated nozzles	P.40
Brass valve nozzles	P.40

**TIE DOWN STRETCH STRAPS**

P.41

**COMBINATION NIPPLES**

P.41

**VICTAULIC (GROOVED) END**

P.41

**HOSE MENDERS**

P.42

**PIN LUG COUPLINGS**

P.42

**STRAINERS**

P.42



**CAST FIRE REDUCERS BRASS**

P.43

Female swivel adapters	P.43
Male swivel adapters	P.43
Double female swivels	P.43

**HEX NIPPLES**

Double male	P.44
Female to male	P.44

**SPANNERS & WRENCHES**

Spanner wrenches	P.44
Adj. hydrant wrenches	P.44
Heavy duty adj. hydrant wrenches	P.45
5 hole hydrant wrenches	P.45
Spanners for Guillemín	P.45
Adjustable spanners	P.45

**SS PARTS WITH BRASS THREADED INSERT**

P.46

**WHIPCHECK SAFETY CABLE STEEL / WHIPSTOCKING**

P.46

**B-1 CENTER PUNCH TOOLS**

P.46

**HOSES**

P.47

Composite hoses	P.47~P.49
Industrial hoses	P.50~P.51
Vinyl tubing	P.51





CAM & GROOVE FITTINGS

CAM & GROOVE COUPLERS & ADAPTERS

TYPE A



Male Adapter  
x  
Female

	ALUMINUM DIE/SQUEEZE CASTING	ALUMINUM SAND CASTING	NYLON	BRASS	STAINLESS STEEL	CARBON STEEL	POLYPROPYLENE
SIZE	PART#	PART#	PART#	PART#	PART#	PART#	PART#
1/2"		RQAB051	RQAD051	RQAE051	RQAF051		RQAJ051
3/4"	RQAA081	RQAB081	RQAD081	RQAE081	RQAF081		RQAJ081
1"	RQAA101	RQAB101	RQAD101	RQAE101	RQAF101		RQAJ101
1-1/4"	RQAA131	RQAB131	RQAD131	RQAE131	RQAF131		RQAJ131
1-1/2"	RQAA151	RQAB151	RQAD151	RQAE151	RQAF151	RQAI151	RQAJ151
2"	RQAA201	RQAB201	RQAD201	RQAE201	RQAF201	RQAI201	RQAJ201
2-1/2"	RQAS251	RQAB251			RQAF251		RQAJ251
3"	RQAA301	RQAB301	RQAD301	RQAE301	RQAF301	RQAI301	RQAJ301
4"	RQAA401	RQAB401	RQAD401	RQAE401	RQAF401	RQAI401	RQAJ401
5"		RQAB501			RQAF501		
6"	RQAA601	RQAB601			RQAF601		
8"		RQAB801					

TYPE B



Female Coupler  
x  
Male

	ALUMINUM DIE/SQUEEZE CASTING	ALUMINUM SAND CASTING	NYLON	BRASS	STAINLESS STEEL	CARBON STEEL	POLYPROPYLENE
SIZE	PART#	PART#	PART#	PART#	PART#	PART#	PART#
1/2"		RQAB052	RQAD052	RQAE052	RQAF052		RQAJ052
3/4"	RQAA082	RQAB082	RQAD082	RQAE082	RQAF082		RQAJ082
1"	RQAA102	RQAB102	RQAD102	RQAE102	RQAF102		RQAJ102
1-1/4"	RQAA132	RQAB132	RQAD132	RQAE132	RQAF132		RQAJ132
1-1/2"	RQAA152	RQAB152	RQAD152	RQAE152	RQAF152	RQAI152	RQAJ152
2"	RQAA201	RQAB202	RQAD202	RQAE202	RQAF202	RQAI202	RQAJ202
2-1/2"	RQAS252	RQAB252		RQAE252	RQAF252		
3"	RQAA302	RQAB302	RQAD302	RQAE302	RQAF302	RQAI302	RQAJ302
4"	RQAA402	RQAB402	RQAD402	RQAE402	RQAF402	RQAI402	RQAJ402
5"		RQAB502			RQAF502		
6"	RQAA602	RQAB602			RQAF602		
8"		RQAB802					

TYPE C



Female Coupler  
x  
Hose Shank

	ALUMINUM DIE/SQUEEZE CASTING	ALUMINUM SAND CASTING	NYLON	BRASS	STAINLESS STEEL	CARBON STEEL	POLYPROPYLENE
SIZE	PART#	PART#	PART#	PART#	PART#	PART#	PART#
1/2"			RQAD053		RQAF053		RQAJ053
3/4"	RQAA083	RQAB083	RQAD083	RQAE083	RQAF083		RQAJ083
1"	RQAA103	RQAB103	RQAD103	RQAE103	RQAF103		RQAJ103
1-1/4"	RQAA133	RQAB133	RQAD133	RQAE133	RQAF133	RQAI133	RQAJ133
1-1/2"	RQAA153	RQAB153	RQAD153	RQAE153	RQAF153	RQAI153	RQAJ153
2"	RQAA203	RQAB203	RQAD203	RQAE203	RQAF203	RQAI203	RQAJ203
2-1/2"	RQAS253	RQAB253		RQAE253	RQAF253		
3"	RQAA303	RQAB303	RQAD303	RQAE303	RQAF303	RQAI303	RQAJ303
4"	RQAA403	RQAB403	RQAD403	RQAE403	RQAF403	RQAI403	RQAJ403
5"		RQAB503			RQAF503		
6"	RQAA603	RQAB603			RQAF603		
8"	RQAA803	RQAB803					

TYPE D



Female Coupler  
x  
Female

	ALUMINUM DIE/SQUEEZE CASTING	ALUMINUM SAND CASTING	NYLON	BRASS	STAINLESS STEEL	CARBON STEEL	POLYPROPYLENE
SIZE	PART#	PART#	PART#	PART#	PART#	PART#	PART#
1/2"		RQAB054	RQAD054	RQAE054	RQAF054		RQAJ054
3/4"	RQAA084	RQAB084	RQAD084	RQAE084	RQAF084		RQAJ084
1"	RQAA104	RQAB104	RQAD104	RQAE104	RQAF104		RQAJ104
1-1/4"	RQAA134	RQAB134	RQAD134	RQAE134	RQAF134		RQAJ134
1-1/2"	RQAA154	RQAB154	RQAD154	RQAE154	RQAF154	RQAI154	RQAJ154
2"	RQAA204	RQAB204	RQAD204	RQAE204	RQAF204	RQAI204	RQAJ204
2-1/2"	RQAS254	RQAB254		RQAE254	RQAF254		
3"	RQAA304	RQAB304	RQAD304	RQAE304	RQAF304	RQAI304	RQAJ304
4"	RQAA404	RQAB404	RQAD404	RQAE404	RQAF404	RQAI404	RQAJ404
5"		RQAB504			RQAF504		
6"	RQAA604	RQAB604			RQAF604		
8"		RQAB804					

TYPE E



Male Adapter  
x  
Hose Shank

	ALUMINUM DIE/SQUEEZE CASTING	ALUMINUM SAND CASTING	NYLON	BRASS	STAINLESS STEEL	CARBON STEEL	POLYPROPYLENE
SIZE	PART#	PART#	PART#	PART#	PART#	PART#	PART#
1/2"			RQAD055		RQAF055		RQAJ055
3/4"	RQAA085	RQAB085	RQAD085	RQAE085	RQAF085		RQAJ085
1"	RQAA105	RQAB105	RQAD105	RQAE105	RQAF105		RQAJ105
1-1/4"	RQAA135	RQAB135	RQAD135	RQAE135	RQAF135		RQAJ135
1-1/2"	RQAA155	RQAB155	RQAD155	RQAE155	RQAF155	RQAI155	RQAJ155
2"	RQAA205	RQAB205	RQAD205	RQAE205	RQAF205	RQAI205	RQAJ205
2-1/2"	RQAS255	RQAB255		RQAE255	RQAF255		
3"	RQAA305	RQAB305	RQAD305	RQAE305	RQAF305	RQAI305	RQAJ305
4"	RQAA405	RQAB405	RQAD405	RQAE405	RQAF405	RQAI405	RQAJ405
5"		RQAB505			RQAF505		
6"	RQAA605	RQAB605			RQAF605		
8"	RQAA805	RQAB805					

TYPE F



Male Adapter  
x  
Male

	ALUMINUM DIE/SQUEEZE CASTING	ALUMINUM SAND CASTING	NYLON	BRASS	STAINLESS STEEL	CARBON STEEL	POLYPROPYLENE
SIZE	PART#	PART#	PART#	PART#	PART#	PART#	PART#
1/2"		RQAB056	RQAD056	RQAE056	RQAF056		RQAJ056
3/4"	RQAA086	RQAB086	RQAD086	RQAE086	RQAF086		RQAJ086
1"	RQAA106	RQAB106	RQAD106	RQAE106	RQAF106		RQAJ106
1-1/4"	RQAA136	RQAB136	RQAD136	RQAE136	RQAF136		RQAJ136
1-1/2"	RQAA156	RQAB156	RQAD156	RQAE156	RQAF156	RQAI156	RQAJ156
2"	RQAA206	RQAB206	RQAD206	RQAE206	RQAF206	RQAI206	RQAJ206
2-1/2"	RQAS256	RQAB256		RQAE256	RQAF256		
3"	RQAA306	RQAB306	RQAD306	RQAE306	RQAF306	RQAI306	RQAJ306
4"	RQAA406	RQAB406	RQAD406	RQAE406	RQAF406	RQAI406	RQAJ406
5"		RQAB506			RQAF506		
6"	RQAA606	RQAB606			RQAF606		
8"		RQAB806					

TYPE DC



Dust Cap

	ALUMINUM DIE/SQUEEZE CASTING	ALUMINUM SAND CASTING	NYLON	BRASS	STAINLESS STEEL	CARBON STEEL	POLYPROPYLENE
SIZE	PART#	PART#	PART#	PART#	PART#	PART#	PART#
1/2"							
3/4"	RQAA087	RQAB087	RQAD087	RQAE087	RQAF087		RQAJ087
1"	RQAA107	RQAB107	RQAD107	RQAE107	RQAF107		RQAJ107
1-1/4"	RQAA137	RQAB137	RQAD137	RQAE137	RQAF137		RQAJ137
1-1/2"	RQAA157	RQAB157	RQAD157	RQAE157	RQAF157	RQAI157	RQAJ157
2"	RQAA207	RQAB207	RQAD207	RQAE207	RQAF207	RQAI207	RQAJ207
2-1/2"	RQAS257	RQAB257		RQAE257	RQAF257		RQAJ257
3"	RQAA307	RQAB307	RQAD307	RQAE307	RQAF307	RQAI307	RQAJ307
4"	RQAA407	RQAB407	RQAD407	RQAE407	RQAF407	RQAI407	RQAJ407
5"		RQAB507			RQAF507		
6"	RQAA607	RQAB607			RQAF607		
8"		RQAB807					

TYPE DP



Dust Plug

	ALUMINUM DIE/SQUEEZE CASTING	ALUMINUM SAND CASTING	NYLON	BRASS	STAINLESS STEEL	CARBON STEEL	POLYPROPYLENE
SIZE	PART#	PART#	PART#	PART#	PART#	PART#	PART#
1/2"							
3/4"	RQAA088	RQAB088	RQAD088	RQAE088	RQAF088		RQAJ088
1"	RQAA108	RQAB108	RQAD108	RQAE108	RQAF108		RQAJ108
1-1/4"	RQAA138	RQAB138	RQAD138	RQAE138	RQAF138		RQAJ138
1-1/2"	RQAA158	RQAB158	RQAD158	RQAE158	RQAF158	RQAI158	RQAJ158
2"	RQAA208	RQAB208	RQAD208	RQAE208	RQAF208	RQAI208	RQAJ208
2-1/2"	RQAS258	RQAB258		RQAE258	RQAF258		
3"	RQAA308	RQAB308	RQAD308	RQAE308	RQAF308	RQAI308	RQAJ308
4"	RQAA408	RQAB408	RQAD408	RQAE408	RQAF408	RQAI408	RQAJ408
5"		RQAB508			RQAF508		
6"	RQAA608	RQAB608			RQAF608		
8"		RQAB808					

SECURITY COUPLERS - TRIGGER LOCK

TYPE B



STAINLESS STEEL
SIZE
3/4"
1"
1-1/4"
1-1/2"
2"
3"
4"

TYPE C



STAINLESS STEEL
SIZE
3/4"
1"
1-1/4"
1-1/2"
2"
3"
4"

TYPE D



STAINLESS STEEL
SIZE
3/4"
1"
1-1/4"
1-1/2"
2"
3"
4"

TYPE DC



STAINLESS STEEL
SIZE
3/4"
1"
1-1/4"
1-1/2"
2"
3"
4"

CAM COUPLINGS SMOOTH TAIL WITH COLLAR

C-STAINLESS STEEL



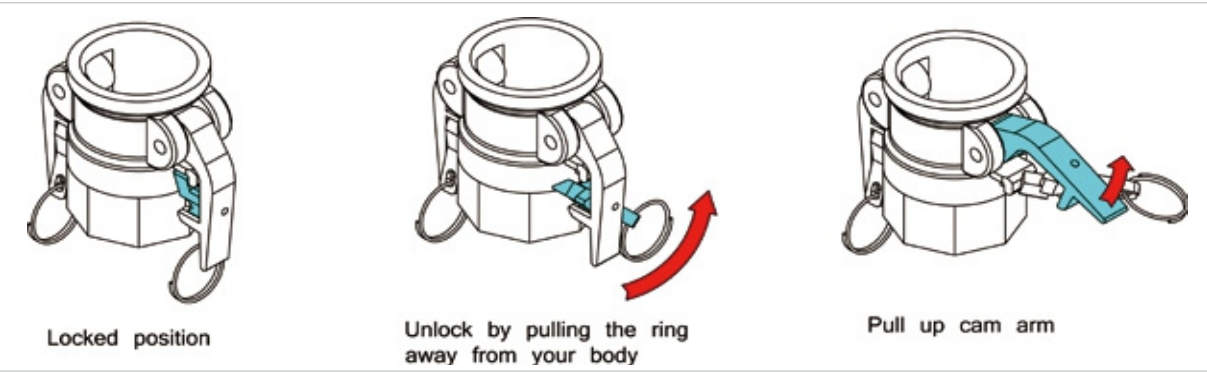
SIZE	PART#
3/4"	RQAG083BX0
1"	RQAG103AX0
1-1/4"	RQAG133AX0
1-1/2"	RQAG153AX0
2"	RQAG203AX0
2-1/2"	RQAG253AX0
3"	RQAG303AX0
4"	RQAG403AX0

E-STAINLESS STEEL



SIZE	PART#
3/4"	RQAG083BX0
1"	RQAG103AX0
1-1/4"	RQAG133AX0
1-1/2"	RQAG153AX0
2"	RQAG203AX0
2-1/2"	RQAG253AX0
3"	RQAG303AX0
4"	RQAG403AX0

How to operate this security system:





CAM & GROOVE FITTINGS

CAM COUPLINGS - DIN 2828

A-STAINLESS STEEL



SIZE	PART#
3/4"	RQAG081XB0
1"	RQAG101XB0
1-1/4"	RQAG131XB0
1-1/2"	RQAG151XB0
2"	RQAG201XB0
2-1/2"	RQAG251XB0
3"	RQAG301XB0
4"	RQAG401XB0

D-STAINLESS STEEL



SIZE	PART#
3/4"	RQAG084AB0
1"	RQAG103AX0
1-1/4"	RQAG134AB0
1-1/2"	RQAG154AB0
2"	RQAG204AB7
2-1/2"	RQAG254AB0
3"	RQAG304AB0
4"	RQAG404AB0

TEFLON GASKET



SIZE	PART#
3/4"	RGZZ4101
1"	RGZZ4102
1-1/4"	RGZZ4103
1-1/2"	RGZZ4104
2"	RGZZ4105
2-1/2"	RGZZ4106
3"	RGZZ4107
4"	RGZZ4108

CAM COUPLINGS SHANK WITH COLLAR

TYPE C



BRASS
SIZE
3/4"
1"
1-1/2"
2"
3"
4"

TYPE E



BRASS
SIZE
3/4"
1"
1-1/2"
2"
3"
4"

REDUCERS / INCREASERS

PART A



ITEM CODE	ALUMINUM SIZE
2015A	2" * 1-1/2"
2030A	2" * 3"
3020A	3" * 2"
3040A	3" * 4"
4030A	4" * 3"
4060A	4" * 6"
6040A	6" * 4"

PART B



ITEM CODE	ALUMINUM SIZE
2015B	2" * 1-1/2"
3020B	3" * 2"
3040B	3" * 4"
4030B	4" * 3"
1510B	1-1/2" * 1"

PART C



ITEM CODE	ALUMINUM SIZE	STAINLESS STEEL SIZE
3020C	3" * 2"	
3040C	3" * 4"	
4030C	4" * 3"	
3025C		3" * 2-1/2"

PART D



ITEM CODE	ALUMINUM SIZE
1510D	1-1/2" * 1"
2015D	2" * 1-1/2"
3020D	3" * 2"
4030D	4" * 3"

PART F



ITEM CODE	ALUMINUM SIZE
2015F	2" * 1-1/2"
3015F	3" * 1-1/2"
3020F	3" * 2"
3040F	4" * 3"



CAM & GROOVE FITTINGS

SPOOL ADAPTERS & COUPLERS



	ALUMINUM	STAINLESS STEEL
ITEM CODE	SIZE	SIZE
10AA	1"	
12AA	1-1/4"	
15AA	1-1/2"	
1520AA	1-1/2" * 2"	
20AA	2"	
20AA	2"	2"
2025AA	2" * 2-1/2"	
2030AA	2" * 3"	
30AA	3"	3"
3040AA	3" * 4"	
40AA	4"	
4060AA	4" * 6"	
60AA	6"	
3020AA	3" * 2"	
30AA	3"	



	ALUMINUM	STAINLESS STEEL
ITEM CODE	SIZE	SIZE
15DD	1-1/2" * 1-1/2"	
20DD	2"	2"
30DD	3"	3"
40DD	4"	



COUPLERS - ADAPTERS



	ALUMINUM	STAINLESS STEEL
ITEM CODE	SIZE	SIZE
1510DA	1-1/2" * 1"	
1520DA	1-1/2" * 2"	
2015DA	2" * 1-1/2"	
2030DA	2" * 3"	
2040DA	2" * 4"	
3015DA	3" * 1-1/2"	
3020DA	3" * 2"	3" * 2"
3025DA	3" * 2-1/2"	
4020DA	4" * 2"	
4030DA	4" * 3"	4" * 3"
4060DA	4" * 6"	
6040DA	6" * 4"	6" * 4"

CAMLOCK SPARE PARTS



Arms in S/S & Brass  
Rings / Pins in S/S & plated Steel  
Gaskets in NBR,Viton,Teflon,Silicone  
and EPDM

SAFETY STRAPS



DRY BREAK COUPLINGS



	ALUMINUM
SIZE	PART#
2"	RQAM901AB

API CAM COUPLINGS

ADAPTER + COUPLER



	ALUMINUM
SIZE	PART#
5" COUPLER * 2-1/2" ADAPTOR	RAAG003

ADAPTER + FLANGE



	ALUMINUM
SIZE	PART#
3" FLANGE * 2-1/2" ADAPTOR	RAAG001
4" FLANGE * 2-1/2" ADAPTOR	RAAG002



# C OMPOSITE HOSE FITTINGS

### MALE END



ALUM	SS
1"	1"
1-1/4"	1-1/4"
1-1/2"	1-1/2"
2"	2"
2-1/2"	2-1/2"
3"	3"
4"	4"

### TYPE C



ALUM	SS
1"	1"
1-1/4"	1-1/4"
1-1/2"	1-1/2"
2"	2"
2-1/2"	2-1/2"
3"	3"
4"	4"

### GUILLEMIN WITH HELICO SHANK



	ALUM	SS
68HE40	DN40	DN40
68HE50	DN50	DN50
68HE65	DN65	DN65
68HE80	DN80	DN80
68HE100	DN100	DN100

### GUILLEMIN WITH SPIRAL SHANK



	ALUMINUM
	SHANK OD
680ST40	1-1/2" (38mm)
680ST50	2" (51mm)
680ST65	2-1/2" (63mm)
680ST76	3" (76mm)
680ST100	4" (102mm)

### TYPE E



ALUM	SS
1"	1"
1-1/4"	1-1/4"
1-1/2"	1-1/2"
2"	2"
2-1/2"	2-1/2"
3"	3"
4"	4"

### FERRULE



SS304	SS316	STEEL	ALUM
1"	1"	1"	
1-1/4"	1-1/4"	1-1/4"	
1-1/2"	1-1/2"	1-1/2"	
2"	2"	2"	2"
2-1/2"	2-1/2"	2-1/2"	
3"	3"	3"	3"
4"	4"	4"	4"
6"		6"	
8"		8"	

### 6" AND ABOVE HOSE NIPPLE



Large bore hose nipple that can be used as a floating flange end.

### GASKET



NBR	VITON	EPDM
1"	1"	1"
1-1/4"	1-1/4"	1-1/4"
1-1/2"	1-1/2"	1-1/2"
2"	2"	2"
2-1/2"	2-1/2"	2-1/2"
3"	3"	3"
4"	4"	4"
6"		
8"		

### KC WITH SPIRAL SHANK



STEEL
2"
3"
4"

### SPIRAL SHANK COUPLING

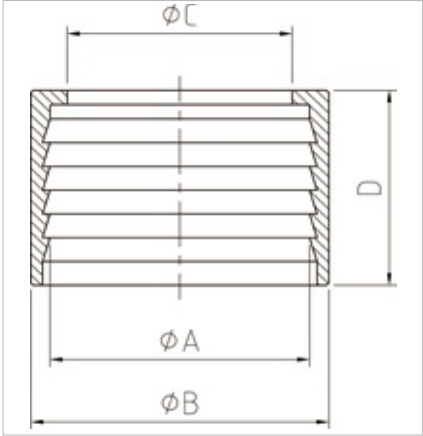


SS	BRASS
2"	2"
2-1/2"	2-1/2"
3"	3"

Available in Brass & Stainless Steel



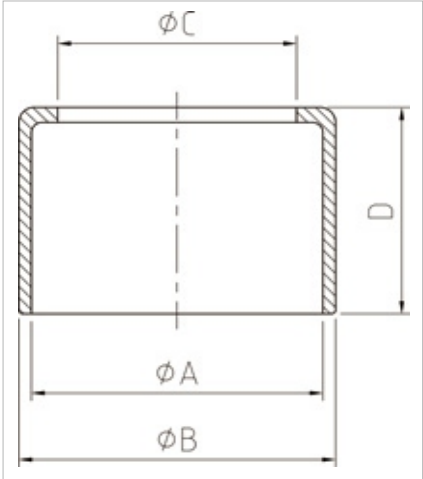
# FERRULES & RINGS



## 304SS FERRULE - SERRATIONS INSIDE

UNIT: MM

SIZE	DN	øA	øB	øC	D
3/4"	19	36.0	40.0	34.0	28.7
3/4"	20	37.0	33.0	32.0	44.0
1"	25	39.0	44.5	32.5	41.0
1"	25	46.0	42.0	40.0	32.7
1-1/4"	32	47.0	54.0	40.0	41.0
1-1/2"	38	52.5	60.0	45.5	41.0
1-1/2"	38	60.5	56.5	54.5	41.5
2"	50	67.0	74.5	60.0	55.0
2"	50	74.0	70.0	68.0	51.6
2-1/2"	65	82.0	89.5	73.5	65.0
2-1/2"	65	87.0	81.0	79.0	57.7
2-3/4"	70	85.0	93.0	74.0	62.0
3"	75	85.0	101.6	85.5	63.0
3"	75	103.0	99.0	96.0	58.0
4"	100	93.6	130.0	113.0	101.0
4"	100	127.0	123.0	119.5	89.7



## STEEL FERRULE

UNIT: MM

SIZE	DN	øA	øB	øC	D
2"	50	66.0	74.0	58.5	55.0
3"	75	92.0	100.0	86.0	69.0
3"	75	96.6	101.6	85.5	63.0
4"	100	120.0	131.5	113.0	95.0

## 304SS FERRULE

UNIT: MM

SIZE	DN	øA	øB	øC	D
1"	25	42.0	45.0	32.0	42.0
1-1/4"	32	50.0	53.0	40.0	45.0
1-1/2"	38	57.0	60.0	43.0	45.0
2"	50	67.0	70.0	57.0	48.0
2"	50	67.0	70.0	55.6	62.7
2-1/2"	65	86.0	90.0	72.0	48.0
3"	80	98.5	102.5	85.0	63.0
3"	80	98.0	101.6	83.0	74.0
3"	80	100.0-101.0	104.0-105.0	85.0-86.0	80.0-83.0
4"	100	122.5	126.5	110.0	87.0
4"	100	118.0	122.0	118.7	85.0

## ALUMINUM FERRULE

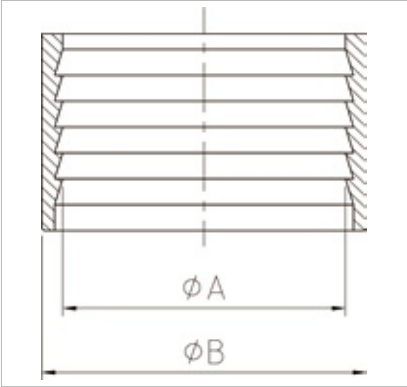
UNIT: MM

SIZE	DN	øA	øB	øC	D
1-1/2"	38	56.0	60.0	43.0	65.0
2"	50	66.5	70.5	55.6	63.5
3"	80	101.5	105.5	86.0	75.0
4"	100	122.0	128.0	107.0	85.9

## STEEL AND 304SS FERRULE

UNIT: MM

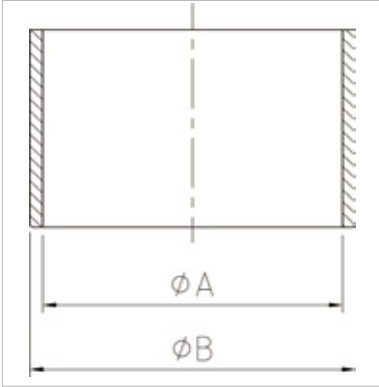
SIZE	DN	øA	øB	øC	D
1/2"	25	40.0-41.0	43.0-44.0	30.0	58.0
1-1/4"	32	47.0-48.0	50.0-51.0	40.0	58.0
1-1/2"	38	54.0-55.0	57.0-58.0	43.0	65.0
2"	50	67.0	70.0	55.0	73.0
2-1/2"	65	82.0-83.0	86.0-87.0	68.0	83.0
3"	80	94.0-95.0	98.0-99.0	81.0	91.0
4"	100	124.0	128.0	106.0	105.0
6"	150	186.0	192	162.0	200.0
8"	200	239.6	245.6	213.0	245.0



## AL RING - SERRATIONS INSIDE

UNIT: MM

DN	øA	øB
45	50.0	56.0
70	76.0	82.0
110	117.0	125.0



## AL RING

UNIT: MM

SIZE	DN	øA	øB
3/4"	20	26.0	30.0
1"	25	31.0	35.0
1"	25	36.0	40.0
1-1/2"	40	46.0	50.0
1-3/4"	45	51.0	55.0
2"	50	51.0	55.0
2"	50	56.0	60.0
2"	50	57.0	61.0
2-1/2"	65	67.0	71.0
2-1/2"	70	76.0	80.0
3"	75	76.0	80.0
3"	80	80.0	84.0
3"	80	84.0	88.0
3-1/2"	90	101.0	105.0
4"	100	108.0	113.0
4-3/4"	120	120.0	125.0
4-3/4"	120	120.0	125.0

## STEEL RING

UNIT: MM

SIZE	DN	øA	øB
2"	65	65	67.8
3"	90	93.7	97.7
4"	120	120	124.0





SUCTION & DELIVERY COUPLINGS

SUCTION & DELIVERY COUPLING  
( INTERCHANGEABLE WITH BAUER TYPE )

COMPLETE SET (GALVANIZED)



SIZE	PART#
2"	RBAU0020
3"	RBAU0030
3-1/2"	RBAU0035
4"	RBAU0040
6"	RBAU0060
8"	RBAU0080

MALE X HOSE TAIL



SIZE	PART#
2"	RBAU1020
3"	RBAU1030
3-1/2"	RBAU1035
4"	RBAU1040
6"	RBAU1060
8"	RBAU1080

FEMALE X HOSE TAIL



SIZE	PART#
2"	RBAU3020
3"	RBAU3030
3-1/2"	RBAU3035
4"	RBAU3040
6"	RBAU3060
8"	RBAU3080

LEVER RING TO SUIT ABOVE



SIZE	PART#
2"	RBAU2020
3"	RBAU2030
4"	RBAU2040
6"	RBAU2060
8"	RBAU2080

FEMALE X HOSE TAIL



SIZE	PART#
10"	RBAU30100
12"	RBAU30120

MALE X HOSE TAIL



SIZE	PART#
10"	RBAU10100
12"	RBAU10120

MALE PART WITH MALE THREAD



SIZE	PART#
4"	RBAU5040
6"	RBAU5060
8"	RBAU5080

FEMALE PART WITH MALE THREAD



SIZE	PART#
4"	RBAU6040
6"	RBAU6060
8"	RBAU6080

CAP TO SUIT ABOVE



RUBBER O-RING



SIZE	PART#
2"	RBAU4020
3"	RBAU4030
4"	RBAU4040
6"	RBAU4060
8"	RBAU4080
10"	RBAU40100
12"	RBAU40120

MALE / FEMALE PART WITH FLANGE

SIZE	PART#
3"	RBAU08003
4"	RBAU08004
6"	RBAU08006
8"	RBAU08008

SHANK WITH FLANGE

SIZE	PART#
3/4"	RBAU09003
4"	RBAU09004
6"	RBAU09005
8"	RBAU09006

SUCTION & DELIVERY COUPLINGS

SUCTION & DELIVERY COUPLING  
( INTERCHANGEABLE WITH BAUER TYPE )

FEMALE X MALE REDUCER WITH GASKET



SIZE
3" * 2"
4" * 3"
4" * 3-1/2"
6" * 4"
8" * 6"

MALE X FEMALE 90° ELBOW WITH GASKET



SIZE
2"
3"
4"
6"
8"

2 MALE X FEMALE TEE TYPE



SIZE
2"
3"
4"
6"
8"

2 FEMALE X MALE Y TYPE



SIZE
2"
3"
4"
6"
8"

MALE X STRAINER



SIZE
2"
3"
4"
6"
8"

SUCTION & DELIVERY COUPLINGS

SUCTION & DELIVERY COUPLING  
( INTERCHANGEABLE WITH PERROT TYPE )

COMPLETE SET (GALVANIZED)



SIZE	PART#
2"	RPER0020
2"-1/2"	RPER0025
3"	RPER0030
4"	RPER0040
6"	RPER0060
8"	RPER0080

MALE X HOSE TAIL



SIZE	PART#
2"	RPER1020
2"-1/2"	RPER1025
3"	RPER1030
4"	RPER1040
6"	RPER1060
8"	RPER1080

FEMALE X HOSE TAIL



SIZE	PART#
2"	RPER3020
2"-1/2"	RPER3025
3"	RPER3030
4"	RPER3040
6"	RPER3060
8"	RPER3080

RUBBER O-RING



SIZE	PART#
2"	RPER4020
2"-1/2"	RPER4025
3"	RPER4030
4"	RPER4040
6"	RPER4060
8"	RPER4080

CAP TO SUIT ABOVE





MALE PART WITH  
MALE THREAD

SIZE	PART#
2"	RPER5020
2"-1/2"	RPER5025
3"	RPER5030
4"	RPER5040
6"	RPER5060
8"	RPER5080

FEMALE PART WITH  
MALE THREAD

SIZE	PART#
2"	RPER6020
2"-1/2"	RPER6025
3"	RPER6030
4"	RPER6040
6"	RPER6060
8"	RPER6080

MALE / FEMALE PART  
WITH FLANGE

SIZE	PART#
2"	RPER8020
2"-1/2"	RPER8025
3"	RPER8030
4"	RPER8040
6"	RPER8060
8"	RPER8080

HOSE TAIL WITH LATCH, WITHOUT EAR



	ALUM
680A5051	DN50

GUILLEMIN WITH HELICO SHANK



	ALUM	SS
68HE40	DN40	DN40
68HE50	DN50	DN50
68HE65	DN65	DN65
68HE80	DN80	DN80
68HE100	DN100	DN100

**G**UILLEMIN COUPLING  
HOSE END, MALE, FEMALE AND CAPS

HOSE TAIL WITH LATCH



	ALUM	SS	BRASS	SHANK OD
6804035	DN35			35mm
6804038	DN38			35mm
6804040	DN40	DN40		40mm
6804045	DN45	DN45	DN45	45mm
6804050	DN50	DN50		50mm
6804055	DN55	DN55		55mm
6804065	DN65	DN65		65mm
6804070	DN70	DN70		70mm
6804076	DN76	DN76		76mm
6804080	DN80			80mm
6804090	DN90			90mm
680100100	DN100	DN100		100mm
680100105	DN105			105mm
680100110	DN110	DN110		110mm
680100125	DN125			125mm
680100150	DN150			150mm

HELICO TYPE- MALE END



	ALUM	SS
67HE25	DN25	DN25
67HE40		DN40
67HE50	DN50	DN50
67HE65	DN65	DN65
67HE80	DN80	DN80
67HE100	DN100	DN100

FEMALE WITH LATCH



	ALUM	SS
68540	DN40	DN40
68550	DN50	DN50
68565	DN65	DN65
68580	DN80	DN80
6858065	DN8065	
685100	DN100	DN100
685125	DN125	
685150	DN150	

FEMALE WITHOUT LATCH



	ALUM	SS
68140	DN40	DN40
68150	DN50	DN50
68165	DN65	DN65
68180	DN80	DN80
681100	DN100	DN100



MALE WITH LATCH



	ALUM	SS
68625	DN25	
68640	DN40	DN40
68650	DN50	DN50
68665	DN65	DN65
68680	DN80	DN80
686100	DN100	DN100

MALE WITHOUT LATCH



	ALUM	SS
68225	DN25	
68240	DN40	DN40
68250	DN50	DN50
68265	DN65	DN65
68280	DN80	DN80
682100	DN100	DN100

SECURITY LOCK



CAD + CAP + CHAIN



	ALUM	SS
683CAD50	DN50	DN50
683CAD80	DN80	DN80

REDUCER



	ALUM	SS
6845040	50*40	
6846540	65*40	65*40
6846550	65*50	65*50
6848040	80*40	
6848050	80*50	80*50
6848065	80*65	80*65
68410040	100*40	
68410050	100*50	
68410065	100*65	
68410080	100*80	100*80

FEMALE REDUCER



	ALUM
6854025	40*25
6855040	50*40
6856550	65*50
6858065	80*65
68510080	100*80

MALE REDUCER



	ALUM
6866550	65*50
6868065	80*65
68610080	100*80

CAP + LATCH + CHAIN



	ALUM	SS
68340	DN40	DN40
68350	DN50	DN50
68365	DN65	DN65
68380	DN80	DN80
683100	DN100	DN100

GUILLEMIN CAP WITH HANDLE,WITHOUT LATCH



GUILLEMIN - NBR GASKET





D

SP COUPLINGS

HOSE END, MALE, FEMALE AND CAPS ALUMINUM

HOSE END WITH LATCH



ITEM	SIZE	SHANK OD
7804045-1 (GROOVED SHANK)	1-1/2"	45mm
7804045-2 (MULTI-SERRATION SHANK)	1-1/2"	45mm
7806570-1 (GROOVED SHANK)	2-1/2"	70mm
7806570-2 (MULTI-SERRATION SHANK)	2-1/2"	70mm

FEMALE WITH LATCH



ITEM	SIZE
7854040	1-1/2"
7854050	1-1/2"
7856565	2-1/2"

FEMALE WITHOUT LATCH



ITEM	SIZE
7814040	1-1/2"
7814050	1-1/2"
7816565	2-1/2"

MALE WITH LATCH



ITEM	SIZE
7864040	1-1/2"
7864050	1-1/2"
7866565	2-1/2"

MALE WITHOUT LATCH



ITEM	SIZE
7824040	1-1/2"
7824050	1-1/2"
7826565	2-1/2"

CAP WITH LATCH



ITEM	SIZE
78340	1-1/2"
78365	2-1/2"

REDUCER WITH LATCH



ITEM	SIZE
7846540	1-1/2" * 2-1/2"

T

ANK WAGON COUPLINGS

VB, MB, VK, MK

VK



SS	BRASS
2"	2"
3"	3"
4"	4"

MK



SS	BRASS
2"	2"
3"	3"
4"	4"

VK + MK



VB



SS	BRASS	ALUM
2"	2"	2"
3"	3"	3"
4"	4"	4"



Tank Wagon couplings with PFA coating also available, please contact for quotation.

TANK WAGON COUPLINGS

VB, MB, VK, MK

MB



SS	BRASS	ALUM
2"	2"	2"
3"	3"	3"
4"	4"	4"

HYPALON GASKET



SIZE
2"
3"
4"

HYPALON - FLAT



SIZE
2"
3"
4"



NC COUPLINGS

MALE & FEMALE END

MALE



SS	BRASS
DN13	DN13
DN19	DN19
DN25	DN25
DN32	DN32
DN38	DN38
DN50	DN50
DN65	DN65
DN75	DN75
DN7565	DN7565
DN100	DN100

FEMALE + NUT



SS	BRASS
DN13	DN13
DN19	DN19
DN25	DN25
DN32	DN32
DN38	DN38
DN50	DN50
DN75	DN75
DN100	DN100

SAFETY CLAMPS



SIZE	ALUM	SS	BRASS
1/2"	13 * 5 mm		
3/4"	19 * 6 mm	19 * 6 mm	
1"	25 * 5 mm	25 * 6 mm	
	25 * 6 mm		
	25 * 8 mm		
1-1/4"	32 * 5 mm	32 * 6 mm	
	32 * 6 mm		
	32 * 8 mm		
1-1/2"	38 * 5 mm	38 * 6.5 mm	
	38 * 6.5 mm		
1-1/2"	38 * 8 mm	38 * 8 mm	38 * 8 mm
	38 * 10 mm		
1-1/2"	40 * 7 mm		
	40 * 10 mm		
	45 * 7 mm		
2"	50 * 6 mm	50 * 8 mm	
	50 * 8 mm		
	50 * 10 mm		
2-1/2"	63 * 6 mm	63 * 8 mm	
	63 * 8 mm		
	63 * 10 mm		

SIZE	ALUM	SS
3"	75 * 6 mm	75 * 8 mm
	75 * 8 mm	
	75 * 10 mm	
	75 * 12 mm	
	80 * 8 mm	
	80 * 10 mm	
	90 * 6.5 mm	
	90 * 8 mm	
4"	100 * 6 mm	
	100 * 8 mm	
	100 * 10 mm	100 * 8 mm
	100 * 12 mm	
	125 * 10 mm	
	125 * 13 mm	
6"	150 * 10 mm	
	150 * 13 mm	
	150 * 15 mm	
	200 * 12 mm	
	200 * 16 mm	



S

TORZ FORGING & GRAVITY CASTING

HOSE END, MALE, FEMALE AND CAPS

HOSE TAIL



HOSE TAIL	FEMALE ADAPTOR	MALE ADAPTOR
SIZE	SIZE	SIZE
2"	2"	2"
3"	3"	3"
4"	4"	4"

B

ARCELONA FITTINGS

HOSE END, MALE, FEMALE AND CAPS

HOSE END



SIZE	ALUM	BRASS
DN25	1"	1"
DN45	1-1/2"	1-1/2"
DN70	2-1/2"	2-1/2"

MALE



SIZE	ALUM	BRASS
DN25	3/4"	3/4"
DN25	1"	1"
DN45	1-1/2"	1-1/2"
DN70	2-1/2"	2-1/2"

FEMALE



SIZE	ALUM	BRASS
DN25	3/4"	3/4"
DN25	1"	1"
DN45	1-1/2"	1-1/2"
DN70	2-1/2"	2-1/2"

F

IRE HOSE COUPLINGS



BRASS		
SIZE	PART#	PART#
1-1/2" * 1-3/4"	RQOB103	RQOAF102
2-1/2" * 3"	RQOB202	RQOAF207

Other sizes are available upon request.

G

ARDEN HOSE COUPLINGS

MACHINED



BRASS	
SIZE	PART#
3/4"	RQPA000
3/8"	RQPA001
1/2"	RQPA002
5/8"	RQPA003
3/4"	RQPA004
1"	RQPA005

# C LAW COUPLINGS / UNIVERSAL COUPLINGS

## U.S. TYPE STEEL / STAINLESS STEEL

### HOSE END



SIZE	PART#
1/4"	
3/8"	RQDEA002
1/2"	RQDEA003
3/4"	RQDEA004
1"	RQDEA005

### MALE END



SIZE	PART#
1/4"	RQDEA201
3/8"	RQDEA202
1/2"	RQDEA203
3/4"	RQDEA204
1"	RQDEA205

### FEMALE END



SIZE	PART#
1/4"	RQDEA101
3/8"	RQDEA102
1/2"	RQDEA103
3/4"	RQDEA104
1"	RQDEA105

### HOSE END



SIZE	PART#
1-1/4"	RQDEA006
1-1/2"	RQDEA007
2"	RQDEA008

### FEMALE END



SIZE	PART#
1-1/4"	RQDEA106
1-1/2"	RQDEA107
2"	RQDEA108

### GASKET



### SAFETY CLIP



## EUROPEAN TYPE STEEL / STAINLESS STEEL

### HOSE END



SIZE	PART#
1/4"	RQDEB001
3/8"	RQDEB002
1/2"	RQDEB003
3/4"	RQDEB004
1"	RQDEB005

### HOSE END WITH COLLAR



SIZE	PART#
1/4"	
3/8"	RQDEB502
1/2"	RQDEB503
3/4"	RQDEB504
1"	RQDEB505

### FEMALE END



SIZE	PART#
1/4"	RQDEB103
3/8"	RQDEB102
1/2"	RQDEB101
3/4"	RQDEB104
1"	RQDEB105

### MALE END



SIZE	PART#
1/4"	RQDEB201
3/8"	RQDEB202
1/2"	RQDEB203
3/4"	RQDEB204
1"	RQDEB205

## C LAMPS

### INTERLOCKING CLAMPS

#### 2 & 4 BOLTS



SIZE	ITEM CODE#
1/2"	B-4
1/2"	B-5
3/4"	BU-9
3/4"	B-9
3/4"	B-10
1"	BU-14
1"	B-14
1"	B-15
1-1/4"	B-19
1-1/2"	BU-24
2"	BU-29
2-1/2"	B-34
3"	B-35

### DOUBLE BOLT CLAMPS



PLATED CAST IRON  
FROM SL22 TO 1450

#### WITH CLIP



SIZE
SK22
SK34
SK40



SAFETY CLAMPS



SIZE	ALUM	SS	BRASS
1/2"	13 * 5 mm		
3/4"	19 * 6 mm	19 * 6 mm	
1"	25 * 5 mm	25 * 6 mm	
	25 * 6 mm		
	25 * 8 mm		
1-1/4"	32 * 5 mm	32 * 6 mm	
	32 * 6 mm		
	32 * 8 mm		
1-1/2"	38 * 5 mm	38 * 6.5 mm	
	38 * 6.5 mm		
1-1/2"	38 * 8 mm	38 * 8 mm	38 * 8 mm
	38 * 10 mm		
1-1/2"	40 * 7 mm		
	40 * 10 mm		
	45 * 7 mm		
2"	50 * 6 mm	50 * 8 mm	
	50 * 8 mm		
	50 * 10 mm		
2-1/2"	63 * 6 mm	63 * 8 mm	
	63 * 8 mm		
	63 * 10 mm		
3"	75 * 6 mm	75 * 8 mm	
	75 * 8 mm		
	75 * 10 mm		
	75 * 12 mm		
	80 * 8 mm		
4"	80 * 10 mm		
	90 * 6.5 mm		
	90 * 8 mm		
	100 * 6 mm		
	100 * 8 mm		
6"	100 * 10 mm	100 * 8 mm	
	100 * 12 mm		
	125 * 10 mm		
	125 * 13 mm		
	150 * 10 mm		
6"	150 * 13 mm		
	150 * 15 mm		
	200 * 12 mm		
	200 * 16 mm		

SPIRAL CLAMPS  
STEEL



WORM DRIVE CLAMPS /  
ZEBRA HOSE CLAMPS  
STAINLESS STEEL / STEEL



SUPERIOR CLAMPS  
STAINLESS STEEL / STEEL



SS304 CLAMPS WITH EPDM



PINNED CLAMPS  
ALUMINUM



SIZE
25 * 6 mm
32 * 6 mm
38 * 6.5 mm
50 * 8 mm
65 * 7 mm
75 * 8 mm
100 * 8 mm

FEMALE SET  
( Hose stem with wing nut & female spud )



SIZE	PART#
1/2"	RQIMA501
3/4"	RQIMA502
1"	RQIMA503
1-1/4"	RQIMA504
1-1/2"	RQIMA505
2"	RQIMA506
2-1/2"	RQIMA507
3"	RQIMA508
4"	RQIMA509

HOSE STEM ONLY



SIZE	PART#
1/2"	RQIMB501
3/4"	RQIMB502
1"	RQIMB503
1-1/4"	RQIMB504
1-1/2"	RQIMB505
2"	RQIMB506
2-1/2"	RQIMB507
3"	RQIMB508
4"	RQIMB509

FEMALE SPUD ONLY



SIZE	PART#
1/2"	RQIMC501
3/4"	RQIMC502
1"	RQIMC503
1-1/4"	RQIMC504
1-1/2"	RQIMC505
2"	RQIMC506
2-1/2"	RQIMC507
3"	RQIMC508
4"	RQIMC509

WING NUT



SIZE	PART#
1/2"	RQIMD501
3/4"	RQIMD502
1"	RQIMD503
1-1/4"	RQIMD504
1-1/2"	RQIMD505
2"	RQIMD506
2-1/2"	RQIMD507
3"	RQIMD508
4"	RQIMD509

MALE PIPE STEM ONLY



SIZE	PART#
1/2"	RQIME501
3/4"	RQIME502
1"	RQIME503
1-1/4"	RQIME504
1-1/2"	RQIME505
2"	RQIME506
2-1/2"	RQIME507
3"	RQIME508
4"	RQIME509



### COMPLETE VALVE



SIZE	PART#
1/2"	RQNA003
2"	RQNA004
2-1/2"	RQNA005
3"	RQNA006
4"	RQNA007
6"	RQNA009
8"	RQNA010

### STRAINER



SIZE	PART#
1/2"	RQNA103
2"	RQNA104
2-1/2"	RQNA105
3"	RQNA106
4"	RQNA107
6"	RQNA109
8"	RQNA110

### FLAPPER VALVE & VALVE NBR GASKET



	FLAPPER VALVE	VALVE NBR GASKET
SIZE	PART#	PART#
1/2"	RQNA203	RQNA303
2"	RQNA204	RQNA304
2-1/2"	RQNA205	RQNA305
3"	RQNA206	RQNA306
4"	RQNA207	RQNA307
6"	RQNA209	RQNA309
8"	RQNA210	RQNA310

### SEAT PLATE



SIZE	PART#
1/2"	RQNA403
2"	RQNA404
2-1/2"	RQNA405
3"	RQNA406
4"	RQNA407
6"	RQNA409
8"	RQNA410



### HOSE END



	BRASS
SIZE	PART#
1/4"	
3/8"	RQDGH038
1/2"	RQDGH012
3/4"	RQDGH034
1"	RQDGH100
1-1/4"	RQDGH125
2-1/4"	RQDGH150

### MALE



	BRASS
SIZE	PART#
1/4"	RQDGM014
3/8"	RQDGM038
1/2"	RQDGM012
3/4"	RQDGM034
1"	RQDGM100
1-1/4"	RQDGM125
2-1/4"	RQDGM150

### FEMALE



	BRASS
SIZE	PART#
1/4"	RQDGF014
3/8"	RQDGF038
1/2"	RQDGF012
3/4"	RQDGF034
1"	RQDGF100
1-1/4"	RQDGF125
2-1/4"	RQDGF150

### BLANK CAP





# SANDBLAST COUPLINGS

HOSE END



		ALUMINUM	BRASS	CAST IRON	NYLON
SIZE	HOSE O.D.	PART#	PART#	PART#	PART#
3/4"	1-1/2"	RQIA101	RQIB101	RQIC101	RQID121
1"	1-7/8"	RQIA102	RQIB102	RQIC102	RQID122
1-1/4"	2-5/32"	RQIA103	RQIB103	RQIC103	RQID123
1-1/2"	2-3/8"	RQIA104	RQIB104	RQIC104	

NOZZLE HOLDER



		ALUMINUM	BRASS	CAST IRON	NYLON
SIZE	HOSE O.D.	PART#	PART#	PART#	PART#
3/4"	1-1/2"	RQIA001	RQIB001	RQIC001	RQID151
1"	1-7/8"	RQIA002	RQIB002	RQIC002	
1-1/4"	2-5/32"	RQIA003	RQIB003	RQIC003	RQID153
1-1/2"	2-3/8"	RQIA004	RQIB004	RQIC004	

FEMALE ADAPTER



# SANITARY COUPLINGS DIN 11851

MALE COUPLING WITH SMOOTH /  
SERRATED HOSE SHANK



SIZE
1"
1-1/4"
1-1/2"
2"
2-1/2"
3"
4"

FEMALE COUPLING WITH SMOOTH /  
SERRATED HOSE SHANK



SIZE
1"
1-1/4"
1-1/2"
2"
2-1/2"
3"
4"

NUT



SIZE
1"
1-1/4"
1-1/2"
2"
2-1/2"
3"
4"

FERRULE



SIZE
1-1/2"
2"
2-1/2"

LINER



SIZE	PART#
1"	RQXJ201
1-1/2"	RQXJ202
2"	RQXJ203
2-1/2"	RQXJ204
3"	RQXJ205
4"	RQXJ206



# T HREADED FITTINGS

304SS / 316SS

WELD NIPPLE



SIZE
1/2"
1-1/2"
2"
2-1/2"
3"
4"

HEXAGON NIPPLE



MALE X WELD END / MALE X MALE
SIZE
1/8"
1/4"
3/8"
1/2"
3/4"
1"
1-1/4"
1-1/2"
2"
2-1/2"
3"
4"

90° ELBOW



SIZE
1/2"
1-1/2"
2"
2-1/2"
3"
4"

REDUCER



SIZE	SIZE
1/4" * 1/8"	1" * 3/4"
3/8" * 1/8"	1-1/4" * 3/8"
3/8" * 1/4"	1-1/4" * 1/2"
1/2" * 1/8"	1-1/4" * 3/4"
1/2" * 1/4"	1-1/4" * 1"
1/2" * 3/8"	1-1/2" * 1/2"
3/4" * 1/8"	1-1/2" * 3/4"
3/4" * 1/4"	1-1/2" * 1"
3/4" * 3/8"	1-1/2" * 1-1/4"
3/4" * 1/2"	2" * 3/4"
1" * 1/4"	2" * 1"
1" * 3/8"	2" * 1-1/4"
1" * 1/2"	2" * 1-1/2"

UNION



SIZE
1/8"
1/4"
3/8"
1/2"
3/4"
1"
1-1/4"
1-1/2"
2"
2-1/2"
3"
4"

HOSE NIPPLE



SIZE
1/4"
3/8"
1/2"
3/4"
1"
1-1/4"
1-1/2"
2"
2-1/2"
3"
4"

# E XPRESS COUPLINGS

HOSE END



	BRASS	SS
SIZE	PART#	PART#
1/4"	RQQC007	
3/8"	RQQC009	
1/2"	RQQC013	
5/8"	RQQC016	
3/4"	RQQC019	RQK150009
1"	RQQC025	RQK150010

FEMALE END



	BRASS	SS
SIZE	PART#	PART#
1/4"		
3/8"	RQQF0035	
1/2"	RQQF0050	
3/4"	RQQF0075	RGK150040
1"	RQQF0100	RGK150050
1-1/4"	RQQF0125	

MALE END



	BRASS	SS
SIZE	PART#	PART#
3/8"	RQQM0035	
1/2"	RQQM0050	
3/4"	RQQM0075	RGK150020
1"	RQQM0100	RGK150030
1-1/4"	RQQM0125	

CAP



	SS
SIZE	PART#
3/8"	RGK150060

# S PIRAL SHANK COUPLINGS



# S TAINLESS STEEL CAPS



Available in Brass & Stainless Steel. Regarding fittings for Composite hoses, please refer to page 10.



# LECO COUPLINGS

MALE



SIZE
3/8"
1/2"
3/4"
1"
1-1/4"
1-1/2"

FEMALE



SIZE
3/8"
1/2"
3/4"
1"
1-1/4"
1-1/2"

NUT



SIZE
3/8"
1/2"
3/4"
1"
1-1/4"
1-1/2"

SET



SIZE
3/8"
1/2"
3/4"
1"
1-1/4"
1-1/2"

REDUCER



1-1/2" MALE X 2" SHANK

REDUCER



1-1/2" MALE X 2" SHANK

# MACON COUPLINGS



SIZE
DN40
DN51
DN63
DN70

# SMS FEMALE COUPLINGS

SMS FEMALE



SIZE
DN2519
DN38
DN51
DN63
DN76
DN101

SMS FEMALE COUPLING WITH SERRATED HOSE SHANK AND COLLAR



SIZE
DN25
DN38
DN51
DN63
DN76
DN101

# F LARED END

FLARED END SINGLE LEVER CLAMP



SIZE	PART#
4"	RQKC005

FLARED END \* SERRATED HOSE TAIL



SIZE	PART#
4"	RQKF004

# V ALVES

BALL VALVE



SIZE	STANDARD PORT FEMALE X FEMALE BRASS 400 PSI W.O.G.	FULL PORT FEMALE X FEMALE 316 STAINLESS 1000 PSI W.O.G. TELON SEAT 2 PIECE
	PART#	PART#
1/4"	RQNB001	RQND001
3/8"	RQNB002	RQND002
1/2"	RQNB003	RQND003
3/4"	RQNB004	RQND004
1"	RQNB005	RQND005
1-1/4"	RQNB006	RQND006
1-1/2"	RQNB007	RQND007
2"	RQNB008	RQND008
2-1/2"		RQND009
3"		RQND010



# W ATER WASHDOWN GUNS

WATER WASHDOWN GUN



PART#
RQZEW03

WITH TRIGGER PROTECTOR



PART#
RQZEW04

# N OZZLES

TAPERED NOZZLE



SIZE	PART#
3/4"	RQJB002
1"	RQJB003
1-1/4"	RQJB004
1-1/2"	RQJB006
2"	RQJB007
2-1/2"	RQJB008

BRASS FOG NOZZLE



NPT / BSP THREAD	
SIZE	PART#
1-1/2"	RQXE005
2-1/2"	RQXE007

PISTOL - GRIP NOZZLE



PART#
RQZE101

INSULATED NOZZLE



PART#
RQZE101

BRASS VALVE NOZZLE



PART#
RQJC001



# TIE DOWN STRETCH STRAPS



# COMBINATION NIPPLES



PLATED STEEL		UNPLATED STEEL		BRASS		STAINLESS STEEL		ALUMINUM	
SIZE	PART#	SIZE	PART#	SIZE	PART#	SIZE	PART#	SIZE	PART#
1/2"	RQFA001	1/2"	RQFA501	1/2"	RQFG001	1/2"	RQFD001		
3/4"	RQFA002	3/4"	RQFA502	3/4"	RQFG002	3/4"	RQFD002		
1"	RQFA003	1"	RQFA503	1"	RQFG003	1"	RQFD003	1"	RQFJ003
1-1/4"	RQFA004	1-1/4"	RQFA504	1-1/4"	RQFG004	1-1/4"	RQFD004	1-1/4"	RQFJ004
1-1/2"	RQFA005	1-1/2"	RQFA505	1-1/2"	RQFG005	1-1/2"	RQFD005	1-1/2"	RQFJ005
2"	RQFA006	2"	RQFA506	2"	RQFG006	2"	RQFD006	2"	RQFJ006
2-1/2"	RQFA007	2-1/2"	RQFA507	2-1/2"	RQFG007	2-1/2"	RQFD007		
3"	RQFA008	3"	RQFA508	3"	RQFG008	3"	RQFD008	3"	RQFJ008
4"	RQFA009	4"	RQFA509	4"	RQFG009	4"	RQFD009	4"	RQFJ009
5"	RQFA010	5"	RQFA510			5"	RQFD010		
6"	RQFA011	6"	RQFA511			6"	RQFD011		
8"	RQFA012	8"	RQFA512						

# VICTAULIC (GROOVED) END



SIZE	PART#
1/2"	RQFG001
3/4"	RQFG002
1"	RQFG003
1-1/4"	RQFG004
1-1/2"	RQFG005
2"	RQFG006
2-1/2"	RQFG007
3"	RQFG008
4"	RQFG009
5"	RQFG010
6"	RQFG011
8"	RQFG012
10"	RQFG013
12"	RQFG014

# HOSE MENDERS



STEEL	
SIZE	PART#
1/2"	RQFG001
3/4"	RQFG002
1"	RQFG003
1-1/4"	RQFG004
1-1/2"	RQFG005
2"	RQFG006
2-1/2"	RQFG007
3"	RQFG008
4"	RQFG009
5"	RQFG010
6"	RQFG011
8"	RQFG012
10"	RQFG013

# PIN LUG COUPLINGS

PIN LUG COUPLING



SIZE	THREAD	ALUMINUM WITH BRASS NUT	ALL BRASS
		PART#	PART#
1-1/2"	NPSM	RQBA001	RQBB001
1-1/2"	NST	RQBA002	RQBB002
2"	NPSM	RQBA003	RQBB003
2-1/2"	NPSM	RQBA004	RQBB004
2-1/2"	NST	RQBA005	RQBB005
3"	NPSM	RQBA006	RQBB006
5"	NPSM	RQBA007	RQBB007
6"	NPSM	RQBA008	RQBB008

PIN LUG COUPLING WASHER



# STRAINERS

STANDARD ROUND HOLE



STEEL	
SIZE	PART#
1-1/2"	RQHA102
2"	RQHA103
2-1/2"	RQHA104
3"	RQHA105
4"	RQHA106
6"	RQHA107
8"	RQHA108

TIN CAN STRAINER



STEEL	
SIZE	PART#
1-1/2"	RQHB101
2"	RQHB102
2-1/2"	RQHB103
3"	RQHB104
4"	RQHB105
6"	RQHB106
8"	RQHB107

# C

## AST FIRE REDUCERS BRASS



FEMALE * MALE	PART#	FEMALE * MALE	PART#
2-1/2" NST * 3/4" NPT	RQCA000	2-1/2" NST * 2" NPT	RQCA007
2-1/2" NST * 3/4" GHT	RQCA001	3" NPSH * 2-1/2" NST	RQCA008
2-1/2" NST * 1" NPS	RQCA002	2-1/2" NST * 1" NPT	RQCA009
2-1/2" NST * 1-1/2" NPS	RQCA003	1-1/2" NST * 1-1/2" NPS	RQCA011
2-1/2" NST * 1-1/2" NPT	RQCA004	2-1/2" NST * 2-1/2" NPS	RQCA014
2-1/2" NST * 1-1/2" NST	RQCA005	3" NST * 2-1/2" NST	RQCA023
2-1/2" NST * 2" NPS	RQCA006	4" NST * 2-1/2" NST	RQCE301
		4-1/2" NST * 2-1/2" NST	RQCE302

### FEMALE SWIVEL ADAPTER



FEMALE SWIVEL * FEMALE	PART#
2-1/2" NST * 2-1/2" NPT	RQCE001

### MALE SWIVEL ADAPTER



FEMALE SWIVEL * MALE	PART#
2-1/2" NST * 2-1/2" NPT	RQCE101
2-1/2" NST * 3" NPT	RQCE102
1-1/2" NST * 1-1/2" NPT	RQCE103

### DOUBLE FEMALE SWIVEL

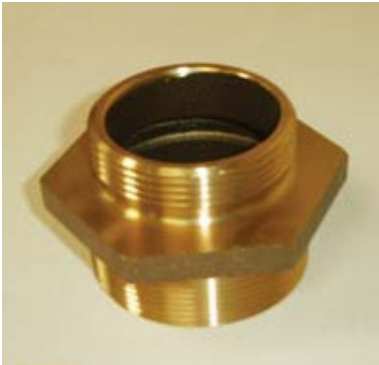


FEMALE * FEMALE	PART#
1-1/2" NST * 1-1/2" NST	RQCE201
2-1/2" NST * 2-1/2" NST	RQCE202
1-1/2" NST * 1-1/2" NPSH	RQCE203

# H

## EX NIPPLES BRASS

### DOUBLE MALE



MALE * MALE	PART#
1-1/2" NST * 1-1/2" NPT	RQCC201
2-1/2" NST * 2-1/2" NPT	RQCC202
2-1/2" NPT * 2-1/2" NST	RQCC217
1-1/2" NPT * 1-1/2" NPS	RQCC204
1-1/2" NPS * 1-1/2" NPT	RQCC205
1" NST * 1" NPT	RQCC206
1" NPSH * 1" NPT	RQCC207
2-1/2" NPT * 2-1/2" NPS	RQCC208
1" NPT * 3/4" GHT	RQCC209
2" NPT * 2-1/2" NST	RQCC210
3" NPT * 2-1/2" NST	RQCC211
2" NPT * 2" NPSH	RQCC214

### FEMALE TO MALE



FEMALE * MALE	PART#	FEMALE * MALE	PART#
1-1/2" NST * 1-1/2" NPT	RQCB001	2-1/2" NPT * 2-1/2" NST	RQCB008
1-1/2" NPT * 1-1/2" NST	RQCB002	2-1/2" NST * 2-1/2" NPS	RQCB011
2-1/2" NST * 2-1/2" NPT	RQCB003	3/4" GHT * 1" NPT	RQCB012
2-1/2" NPT * 2-1/2" NST	RQCB004	1" NPT * 3/4" GHT	RQCB013
1-1/2" NPT * 1-1/2" NPS	RQCB005	1-1/2" NST * 1-1/2" NPS	RQCB014
1-1/2" NPS * 1-1/2" NPT	RQCB007	3" NPT * 2-1/2" NST	RQCE401
		2" NPT * 2-1/2" NST	RQCE402
		2-1/2" NST * 3" NPT	RQCE403
		2" NPT * 2-1/2" NST	RQCE404
		1-1/2" NPT * 3/4" GHT	RQCE405

# S

## PANNERS & WRENCHES

### SPANNER WRENCH



SIZE	PART#
1-1/2"	RQDB001
2"	RQDB002
2-1/2"	RQDB003
3"	RQDB004
4"	RQDB005

Plated Malleable-Iron for Pin Lug

### ADJ. HYDRANT WRENCH



PART#
RQDB102

Steel Handle, Cast Iron Head. 1-3/4" Max Pentagon Opening. For Pin or Rocker Lug Thru 3".



# Spanners & Wrenches

## HEAVY DUTY ADJ. HYDRANT WRENCH



STEEL
PART#
RQDB105

Cast Iron Head, Steel Handle, for Pentagon Nuts to 1-3/4" Spanner, for Pin and Rocker Lug - 1-1/2" thru 6"

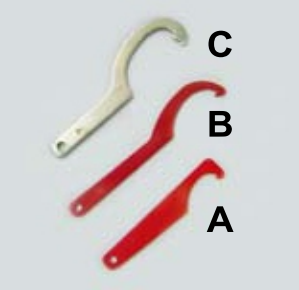
## 5 HOLE HYDRANT WRENCH



STEEL
PART#
RQDB101

Cast Iron Plated-Fits Pentagon 1", 1-1/8", 1-1/4", & 1-3/4" Construction

## FOR GUILLEMIN



STEEL	
TYPE	PART#
A	RGZ001
B	RGZ002
C	RGZ003



STEEL
PART#
RGZ005
DN 20-150



BRASS
PART#
RGZ060B

## ADJUSTABLE SMS/MACON SPANNER



304SS
PART#
RGZ006

## ADJUSTABLE SPANNER



STEEL
PART#
RGZ004

90-175

# S S PARTS WITH BRASS THREADED INSERT



PART#
RGZ997

# W HIPCHECK SAFETY CABLE STEEL



CABLE	SIZE	LENGTH	PART#
1/8"	1/2"~1-1/4"	20~14"	RQZA001
1/4"	1-1/2"~3"	38"	RQZA002

# W HIP-STOCKING STEEL, DOUBLE LOOPS ZINC PLATED



PART#	SIZE
RQZA-WS-0815	8 - 15 mm
RQZA-WS-1525	15 - 25 mm
RQZA-WS-25-45	25 - 45 mm
RQZA-WS-30-50	30 - 50 mm
RQZA-WS-60-80	60 - 80 mm

# B -1 CENTER PUNCH TOOLS



PART#
RQZZ102



We manufacture a full range of composite hoses by utilizing special materials, with steel (and /or stainless steel) wires on both sides of the hoses to add strength. Combining with our proprietary, state of the art manufacturing equipment, our composite hoses are not only light and flexible, but also incredibly strong. The materials that were selected all have excellent resistance to most corrosive chemicals and hydrocarbon. Our composite hoses comply with various international standards such as BS 5842 and EN13765:2010. The operating range of our products are from minus 30-degree to 80-degree Celsius and higher. Composite hoses are light, safe, strong, oil and chemical resistant, thus could replace traditional rubber and metal hoses.

Furthermore, we offer a wide range of composite hose couplings and in-house hose assemblies. All hose assemblies are pressure tested prior to shipment to ensure quality and longevity of our products.

We welcome any inquiries and questions.

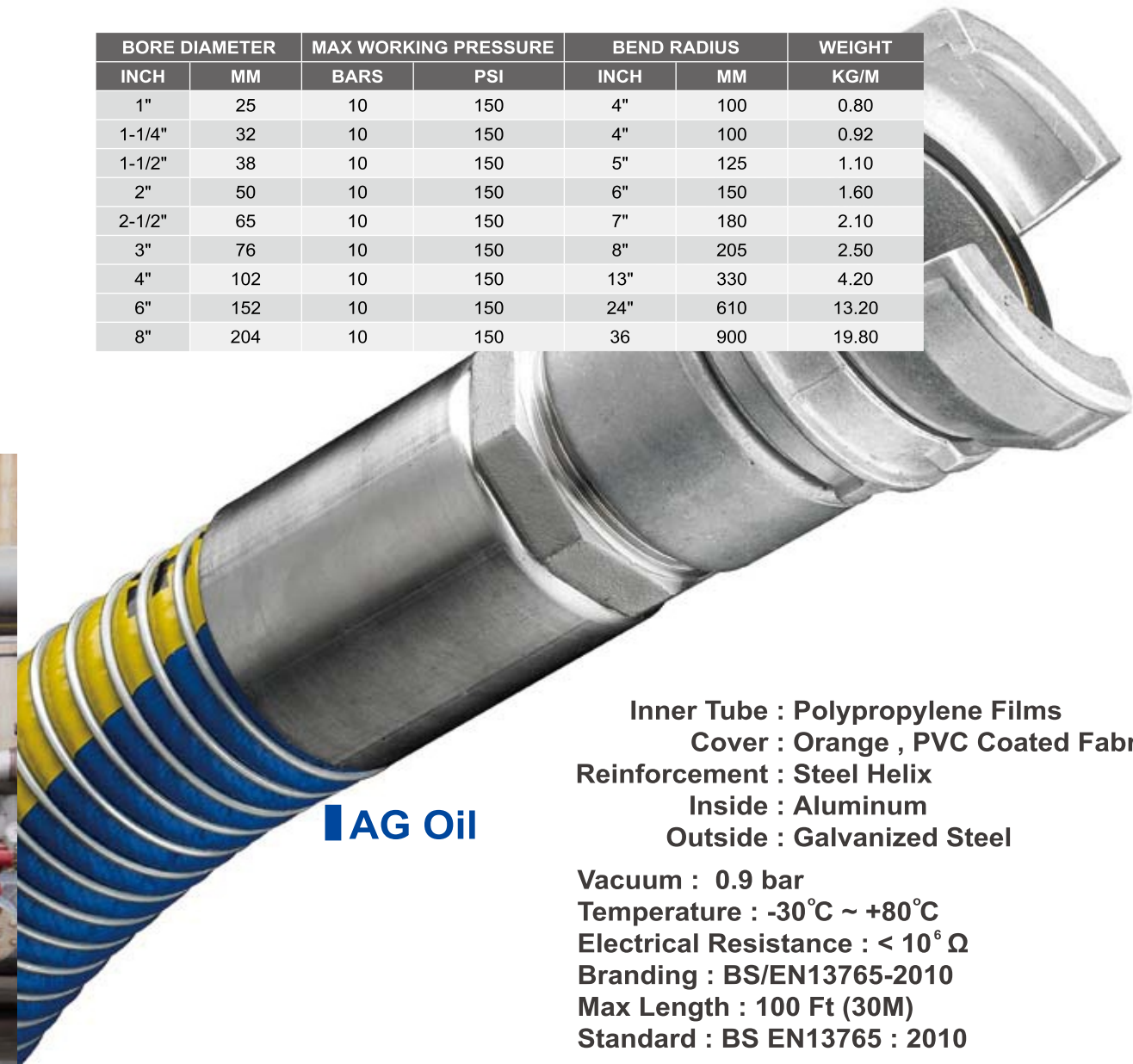


### GG Oil

Inner Tube : Polypropylene Films  
Cover : Blue , PVC Coated Fabric  
Reinforcement : Steel Helix  
Inside : Galvanized Steel  
Outside : Galvanized Steel

Vacuum : 0.9 bar  
Temperature : -30°C ~ +100°C  
Electrical Resistance : < 10<sup>6</sup> Ω  
Branding : BS/EN13765-2010  
Max Length : 100 Ft (30M) for 1"~4"  
60 Ft (18M) for 6" and 8"  
Standard : BS EN13765 : 2010

BORE DIAMETER		MAX WORKING PRESSURE		BEND RADIUS		WEIGHT
INCH	MM	BARS	PSI	INCH	MM	KG/M
1"	25	10	150	4"	100	0.80
1-1/4"	32	10	150	4"	100	0.92
1-1/2"	38	10	150	5"	125	1.10
2"	50	10	150	6"	150	1.60
2-1/2"	65	10	150	7"	180	2.10
3"	76	10	150	8"	205	2.50
4"	102	10	150	13"	330	4.20
6"	152	10	150	24"	610	13.20
8"	204	10	150	36"	900	19.80



### AG Oil

Inner Tube : Polypropylene Films  
Cover : Orange , PVC Coated Fabric  
Reinforcement : Steel Helix  
Inside : Aluminum  
Outside : Galvanized Steel

Vacuum : 0.9 bar  
Temperature : -30°C ~ +80°C  
Electrical Resistance : < 10<sup>6</sup> Ω  
Branding : BS/EN13765-2010  
Max Length : 100 Ft (30M)  
Standard : BS EN13765 : 2010

BORE DIAMETER		MAX WORKING PRESSURE		BEND RADIUS		WEIGHT
INCH	MM	BARS	PSI	INCH	MM	KG/M
2"	50	10	150	7"	180	1.30
2-1/2"	65	10	150	6"	150	1.60
3"	76	10	150	8"	205	2.00
4"	102	10	150	13"	330	2.70



## PG Chemical

Inner Tube : Polypropylene Films  
Cover : Blue or Grey , PVC Coated FabricSteel  
Reinforcement : Steel Helix  
Inside : PP Coated Steel  
Outside : Galvanized Steel

Vacuum : 0.9 bar  
Temperature : -30°C ~ +100°C  
Electrical Resistance : < 10<sup>6</sup> Ω  
Branding : BS/EN13765-2010  
Max Length : 100 Ft (30M) for 1"~4"  
60 Ft (18M) for 6" and 8"  
Standard : BS EN13765 : 2010

BORE DIAMETER		MAX WORKING PRESSURE		BEND RADIUS		WEIGHT
INCH	MM	BARS	PSI	INCH	MM	KG/M
1"	25	10 , 14 , 17	150 , 200 , 250	4"	100	0.80
1-1/4"	32	10 , 14 , 17	150 , 200 , 250	4"	100	0.92
1-1/2"	38	10 , 14 , 17	150 , 200 , 250	5"	125	1.20
2"	50	10 , 14 , 17	150 , 200 , 250	7"	150	1.90
2-1/2"	65	10 , 14 , 17	150 , 200 , 250	8"	180	2.50
3"	76	10 , 14 , 17	150 , 200 , 250	11"	280	3.00
4"	102	10 , 14 , 17	150 , 200 , 250	13"	330	4.00
6"	152	10 , 14 , 17	150 , 200 , 250	24"	610	12.00
8"	204	10 , 14 , 17	150 , 200 , 250	36"	900	17.00

## SG P.T.F.E and SS P.T.F.E

Inner Tube : P.T.F.E Films  
Cover : Blue or Red , PVC Coated Fabric  
Reinforcement :

Type	SG	SS
Inside	SS316	SS316
Outside	Galvanized steel	SS316

Vacuum : 0.9 bar  
Temperature : -30°C ~ +120°C  
Electrical Resistance : < 10<sup>6</sup> Ω  
Branding : BS/EN13765-2010  
Max Length : 100 Ft (30M) for 1"~4"  
60 Ft (18M) for 6" and 8"  
Standard : BS EN13765 : 2010

BORE DIAMETER		MAX WORKING PRESSURE		BEND RADIUS		WEIGHT
INCH	MM	BARS	PSI	INCH	MM	KG/M
1"	25	10 , 17	150, 250	4"	100	0.80
1-1/4"	32	10 , 17	150, 250	4"	100	0.96
1-1/2"	38	10 , 17	150, 250	5"	125	1.20
2"	50	10 , 17	150, 250	7"	150	1.90
2-1/2"	65	10 , 17	150, 250	8"	180	2.50
3"	76	10 , 17	150, 250	11"	280	3.00
4"	102	10 , 17	150, 250	13"	330	4.20
6"	152	10 , 17	150, 250	24"	610	13.20
8"	204	10 , 17	150, 250	36"	900	19.80

## INDUSTRIAL HOSES

### TWIN WELDING HOSE - BULK

SERVICE : GAS WELDING - RED & GREEN - GRADER  
REINFORCEMENT : BRAIDED SYNTHETIC YARNS.  
PACKAGE : COILS  
TUBE : SBR  
COVER : SBR

ID	BRAID	W.P.
3/16"(5X11.5mm)	1	200
1/4" (6.5X13.5mm)	1	200
5/16"(8X11.5mm)	1	200
3/8" (9.5X17.5mm)	1	200

### WATER DISCHARGE HOSE - RUBBER

SERVICE : LIGHTWEIGHT, HIGH WORKING PRESSURE.CAN BE ROLLED UP FOR STORAGE.  
REINFORCEMENT : SYNTHETIC CORD PLIES  
PACKAGE : COIL  
TUBE : SBR  
COVER : SBR - BLACK WRAPPED FINISH

ID	O.D.	BRAID	W.P.
1-1/2"	1.76"	2	150
2"	2.28"	2	150
2-1/2"	2.72"	2	150
3"	3.32"	2	150
4"	4.44"	2	150
5"	5.25"	2	150
6"	6.44"	3	150
8"	8.52"	4	150
10"	10.62"	4	150
12"	12.74"	4	150

### WATER SUCTION HOSE - RUBBER

SERVICE : WATER SUCTION & DISCHARGE  
REINFORCEMENT : TEXTILE CORD W / WIRE HELIX  
PACKAGE : COIL  
TUBE : EPDM  
COVER : SBR - BLACK W / GREEN STRIPE

ID	O.D.	BRAID	W.P.
1-1/2"	2-3/8"	2P+1W	100
2"	2-9/16"	2P+1W	100
2-1/2"	3-1/18"	2P+1W	75
3"	3-9/16"	2P+1W	75
4"	4-11/16"	2P+1W	75
5"	5-13/16"	3P+1W	75
6"	7"	3P+1W	75
8"	9-1/16"	4P+1W	75
10"	11-3/8"	4P+1W	30
12"	13-3/8"	6P+1W	30
14"	14-3/8"	6P+1W	30

TANK TRUCK HOSE - 150 PSI

SERVICE : SUCTION & DISCHARGE OF PETROLEUM PRODUCTS. HANDLES AROMATICS TO 50 %  
REINFORCEMENT : TEXTILE CORD W / WIRE HELIX.  
PACKAGE : COIL  
TUBE : NITRILE  
COVER : NEOPRENE - BLACK W / RED STRIPE

ID	O.D.	BRAID	W.P.
1-1/2"	2.00"	2P+1W	150
2"	2.56"	2P+1W	150
2-1/2"	3.08"	2P+1W	150
3"	3.72"	2P+1W	150
4"	4.76"	2P+1W	150

VINYL TUBING

TUBE : FOOD GRADE CLEAR NON - TOXIC.  
APPLICATIONS INCLUDE : DRINKING WATER LINES,LIQUID FOOD & BEVERAGE TRANSFER LINES.

ID		O.D.	W.P.@ 68°F
3/16"	X	5/16"	55
1/4"	X	3/8"	45
1/4"	X	1/2"	70
5/16"	X	7/16"	45
3/8"	X	1/2"	45
3/8"	X	5/8"	55
1/2"	X	5/8"	30
1/2"	X	3/4"	50
5/8"	X	7/8"	40
3/4"	X	1"	40
1"	X	1-1/4"	35
1-1/4"	X	1-1/2"	40
1-1/2"	X	1-7/8"	35
2"	X	2-7/16"	35

CLEAR BRAIDED : FOOD GRADE CLEAR NON - TOXIC.  
APPLICATIONS INCLUDE : DRINKING WATER LINES,LIQUID FOOD & BEVERAGE TRANSFER LINES.

ID		O.D.	W.P.@ 68°F
1/4"	X	3/8"	200
5/16"	X	9/16"	200
3/8"	X	5/8"	200
1/2"	X	3/4"	200
5/8"	X	7/8"	200
3/4"	X	1-1/16"	200
1"	X	1-5/16"	200
1-1/4"	X	1-11/16"	200
1-1/2"	X	1-7/8"	200
2"	X	2-1/2"	200